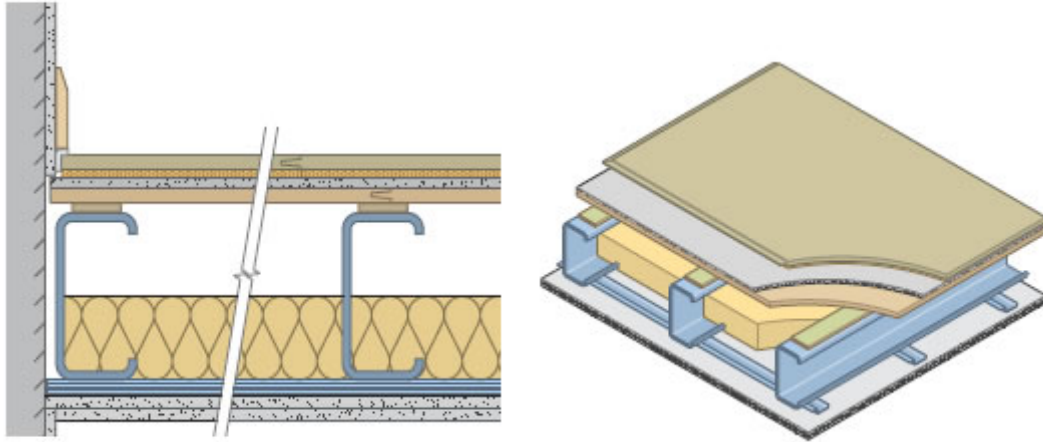




Monarfloor Deck 18 Steel Frame



Description

This system is designed to reduce sound transmission through existing timber floors in situations where finished floor height is not critical. Monarfloor Deck 18 Steel Frame consists of a layer of 8mm LRAC foam bonded to 18mm P5 V313 moisture resistant chipboard.

Steel constructions can be demanding applications for controlling sound transmission because of the ease with which steel conducts sound. However, a Monarfloor Deck 18 acoustic system can reduce airborne and impact sound transmission to acceptable levels.

Monarfloor Deck 18 is a deck overlay system that can be used on steel frame floors over a sub-floor of chipboard and plasterboard. Deck 18 consists of a layer of LRAC foam bonded to 18mm V313 P5 moisture resistant chipboard.

Specification

Composition:	18mm V313 chipboard 8mm LRAC foam type II
Thickness:	26mm
Board size:	2400mm x 600mm
Board weight:	22.20kg
Weight/m ² :	14.41kg
Construction:	Steel joists at 450mm centres packed with 100mm of 45kg/m ³ insulation between with Monarfloor 6mm isolation flanking band, 18mm chipboard deck, 12.5mm plasterboard and then overlayed with Monarfloor Deck 18, with a 30mm (24kg/m ²) double-boarded ceiling on resilient bars perpendicular to the joist direction below.

DnT,w (Part H): 54dB
DnT,w + Ctr: 47dB
L'nT,w: 56dB

Installation

Monarfloor 6mm isolation flanking band should be laid along the tops of the steel joists and overlaid with an 18mm chipboard deck and 12.5mm plasterboard. Monarfloor Deck 18 should then be laid over the plasterboard in broken bond with all joints glued.

Associated products:

Noise Stop Isolation Tape
Dense Fibre Matting