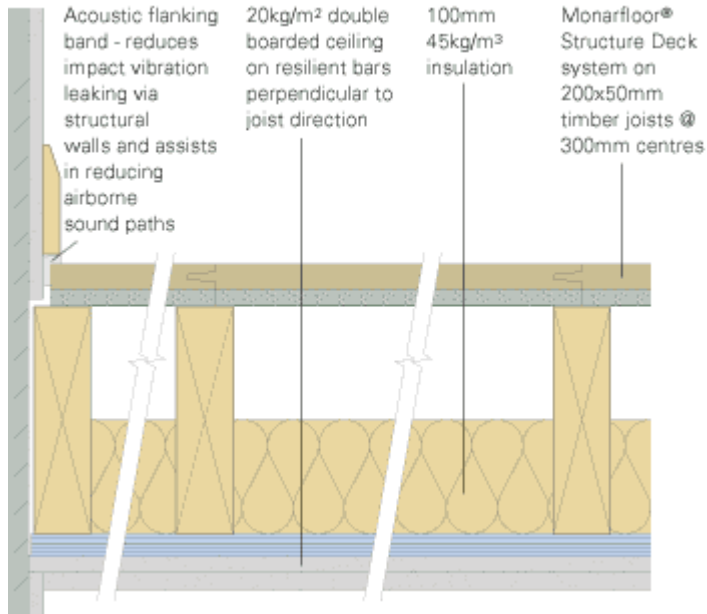




Monarfloor Structure Deck



Description

Monarfloor Structure Deck is designed to reduce sound transmission through new and existing applications. Monarfloor Structure Deck consists of a 15mm layer of LRAC foam bonded to 22mm P5 V313 moisture resistant chipboard. When installed as part of a complete sound reduction system it enables a timber floor to meet the sound transmission regulations of Part E (see tables).

Specification

Transmission Performance:

Treated floor: (Timber subfloor)

DnT,w + Ctr: 46dB

L'nT,w: 51dB

Product Data:

Overall board dimensions: 2400mm x 600mm x 37mm thick

Foam thickness: 15mm

Foam composition: Recycled Low Resonance type II Acoustic Chip (LRAC) foam

Associated products:

- Noise Stop Isolation Tape
- Dense Fibre Matting