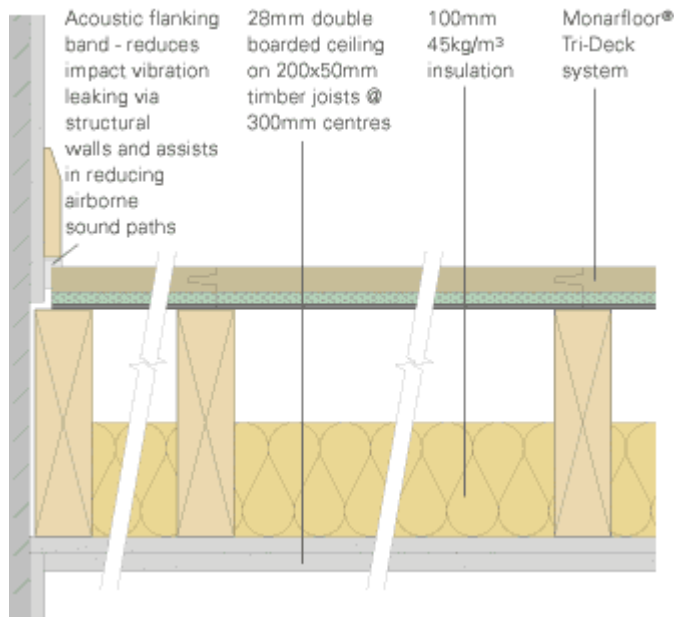




MonarFloor Tri-Deck



Description

This system is designed to reduce sound transmission through existing applications. Monarfloor Tri-deck consists of 22mm P5 V313 moisture resistant chipboard bonded to 8mm layer of LRAC foam bonded to 5mm foam rubber. When installed as part of a complete sound reduction system it enables a timber floor to meet the sound transmission regulations of Part E (see table).

Specification

Sound transmission performance

Treated floor: (Timber subfloor)

DnT,w + Ctr: 48dB

L'nT,w: 56dB

Product Data:

Overall board dimensions: 2400 x 600 x 35mm thick

Foam Thickness: 13mm

Foam composition: Recycled Low Resonance type I Acoustic Chip (LRAC) foam, foam rubber.

Associated products

NoiseDeck 36

NoiseDeck 32

Dense Fibre Matting

NoiseStop Isolation Tape