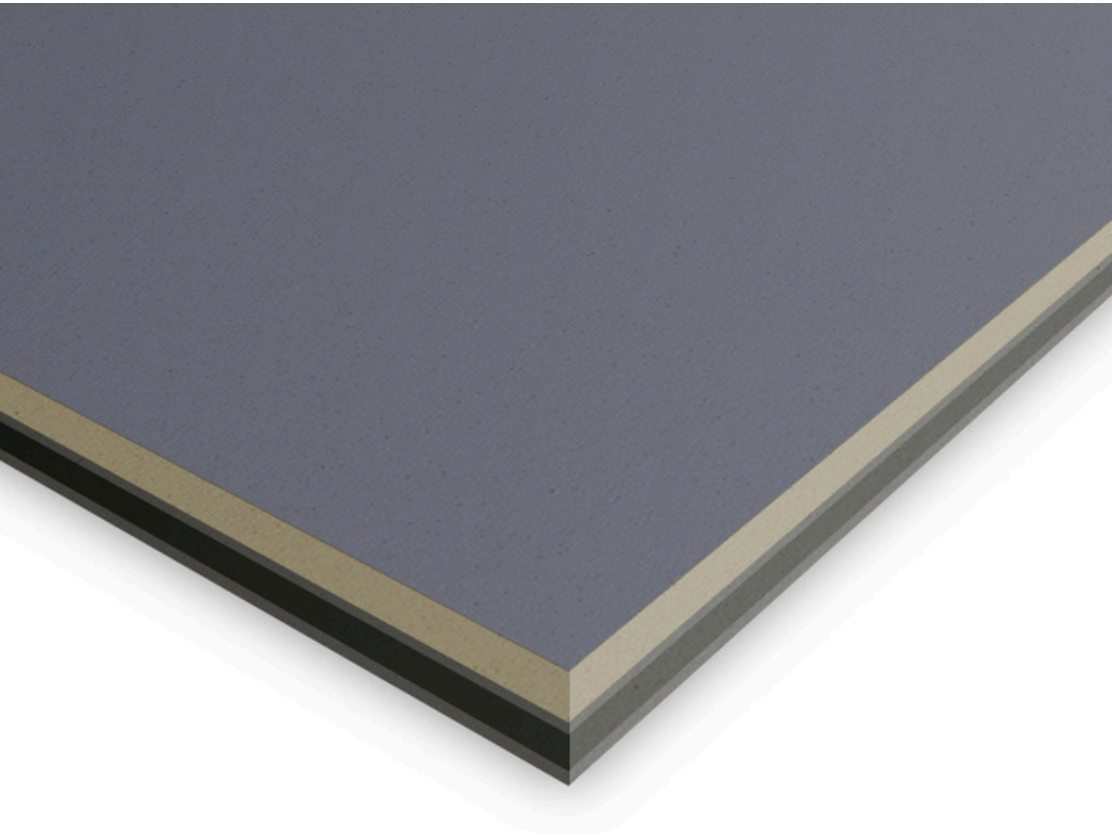


NOISESTOP ACOUSTIC PANEL

SOUNDPROOFING SPECIALISTS
NOISESTOP SYSTEMS

NOISESTOP
SYSTEMS



**NOISESTOP
ACOUSTIC PANEL
DIRECT TO WALL
SOUNDPROOFING
SOLUTION**

NOISESTOP
SYSTEMS

DIRECT TO WALL SOUNDPROOFING

Not every room that requires soundproofing has the space required to install a complete soundproofing system.

Direct to wall soundproofing solutions are suitable for rooms that require medium levels of noise control.

NOISESTOP ACOUSTIC PANEL

As a direct to wall soundproofing solution, the Noisestop Acoustic Panel is our slimmest stand-alone product.

Apply either directly onto solid party walls to soundproof against noisy neighbours or increase the sound insulation of stud walls by applying the panel over the existing plasterboard.

These solutions are popular for use in rooms that are already tight for space but need additional soundproofing.

NOISESTOP ACOUSTIC PANEL

Our slimmest direct to wall soundproofing solution. Minimise space loss and increase the sound insulation in your home.

NOISESTOP ACOUSTIC PANEL

Reduce neighbour noises such as clear conversation and TV noise through party walls, upgrade existing stud walls

SPACE SAVING

Space loss is kept to a minimum using this 22.5mm soundproofing panel. Minimal disruption within the room

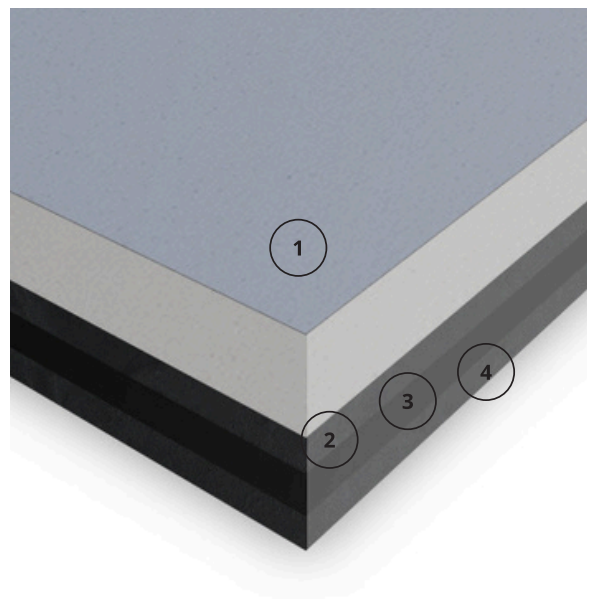
SOUNDPROOFING

Soundproof your home, office or workplace to restore quiet within rooms that will only allow minimal space loss

Product Features

Comprises of four pre-bonded layers to form the complete 1200mm x 1200mm panel

- 22.5mm thick
 - Weight 29kg
 - 49dB on a single-skin brick wall
 - 48dB on a stud wall
 - 30-minute fire rating
1. 12.5mm acoustic plasterboard
 2. 5kg mass-loaded vinyl
 3. 5mm acoustic grade closed-cell foam
 4. 5kg mass-loaded vinyl



Noisestop Acoustic Panel comprises four layers that are pre-bonded for ease of installation. The board's surface is a 12.5mm acoustic plasterboard with a tapered edge, allowing for a plaster skim or taping and filling before decorating. The triple-layered acoustic membrane on the back of the panel is a 5kg mass-loaded vinyl, a 5mm closed-cell acoustic grade foam, and another 5kg mass-loaded barrier layer.

Combining the materials that make up this soundproofing panel ensures the airborne sound is blocked and absorbed. Soundproofing walls using this type of panel will reduce the passage of airborne sound transferring through separating brick party walls and internal stud walls.

NOISESTOP ACOUSTIC PANEL

Our slimmest direct to wall soundproofing solution. Minimise space loss and increase the sound insulation in your home.

Fitting

Preparing the wall - Before fitting the panels, check and prepare the wall to ensure any holes are filled. Remove skirting and coving; if you have electrical outlets, they should be extended if necessary. Once the installation is finished, reinstate the skirting, coving, and electrical outlets.

Plan the fitting - Install the panels anywhere along the wall, starting with the bottom row. Measure the wall and start at a point that means you are not left with a small off-cut at the end. Cut the panels with either a hand saw or a circular saw.

Attaching the panels - Apply the Noisestop Acoustic Panel to the walls using Hammer Fixings or the Smart Tack Adhesive. We only suggest using the adhesive on flat walls; about one tin will fix five panels. Fix the panels using nine hammer fixings per board if the wall is uneven or in poor condition. Screw the panels onto timber or metal studs using drywall screws.

Acoustically seal the boards - To ensure an acoustic seal between the boards, you should run a bead of acoustic sealant along the edge of the panels as you butt them together. Leave a 2-3mm gap between the boards and floor, walls and ceiling and fill with an acoustic sealant once the panels are all in place.

Finish fitting the panels - Continue along the bottom row until the panels are all fitted, then start the next row following the same method as the first row. Use acoustic sealant around the wall's perimeter and between any boards that require additional sealant.

How to finish - Before decorating, we recommend plastering the panels. Alternatively, the edges can be taped and filled, or heavy-duty lining paper can be used. You can also paint directly onto the panels.

Electrical outlets - To maintain the wall's acoustic integrity, Use acoustic putty pads inside recessed back boxes of electrical points.

NOISESTOP ACOUSTIC PANEL

Our slimmest direct to wall soundproofing solution. Minimise space loss and increase the sound insulation in your home.

System Performance

Performance Data

Noisestop Acoustic Panel applied to one side of the stud wall

| | |
|--|------------|
| Untreated 100mm stud wall with acoustic insulation and 12.5mm plasterboard either side | DnT,w 36dB |
| Acoustic Panel 22.5mm applied to one side | DnT,w 48dB |
| Improvement | DnT,w 12dB |

Performance Data

Noisestop Acoustic Panel applied to 100mm brick wall

| | |
|--|------------|
| Untreated 100mm single skin brick wall | DnT,w 38dB |
| Acoustic Panel applied to 100mm brick wall | DnT,w 49dB |
| Improvement | DnT,w 11dB |

Rating in accordance to ISO 717-1

