

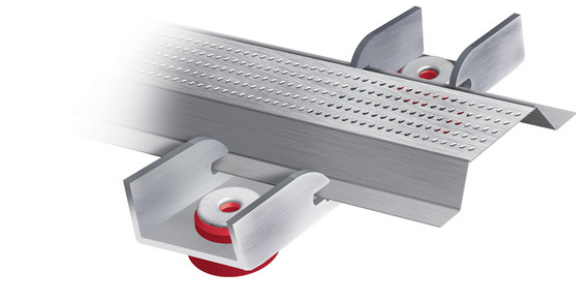
# AcoustiClip System



Acoustic isolation clip system for walls and ceilings

**New Build | Conversions | Refurbishment | Domestic | Commercial**

## AcoustiClip & AcoustiChannel



## AcoustiClip System

- The AcoustiClip System comprises a vibration-absorbing channel secured to an anti-vibration clip fastened to any wall or ceiling.
- Increase the sound insulation performance of separating walls and ceilings using the AcoustiClip system on stud walls, directly onto solid walls, ceiling joists and concrete ceilings.

## Product Data

**AcoustiClip:** 35mm wide x 28mm deep x 138mm long

**AcoustiChannel:** 78mm wide x 26mm deep x 1800mm long

**Composition:** Roll-formed galvanised steel to BS EN 10346:2009. Continuously hot-dip coated flat steel products

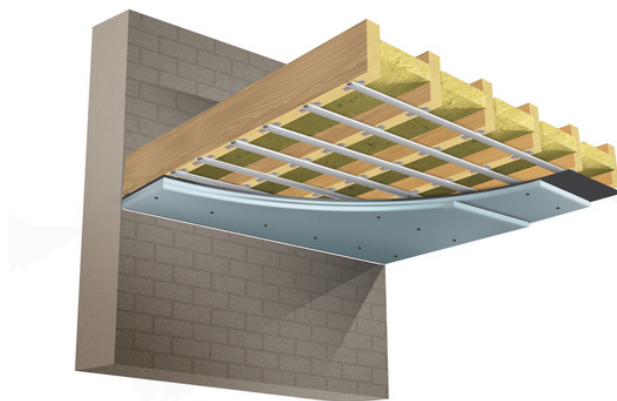
## Benefits

- A simple installation solution attaches to all types of walls and ceilings.
- Increased performance compared to resilient bars.
- Greater load capacity when compared to other clip systems using only one fixing point.

## AcoustiClip Ceiling System

Timber and concrete ceiling solution

- System thickness 77mm
- Noise reduction
- **Timber**
  - Airborne 61dB
  - Impact 55dB
- **Concrete**
  - Airborne 64dB
  - Impact 54dB



## AcoustiClip Wall System

Solid walls and stud walls

- System thickness 77mm (no stud frame)
- Noise reduction
- **Direct to wall system** (no stud)
  - Airborne 61dB
- **System with a stud frame**
  - Airborne 65dB



# AcoustiClip System

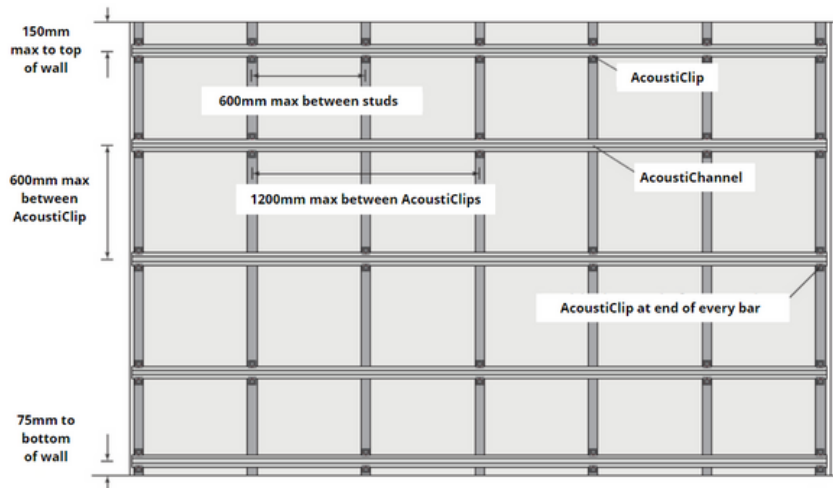


Acoustic isolation clip system for walls and ceilings

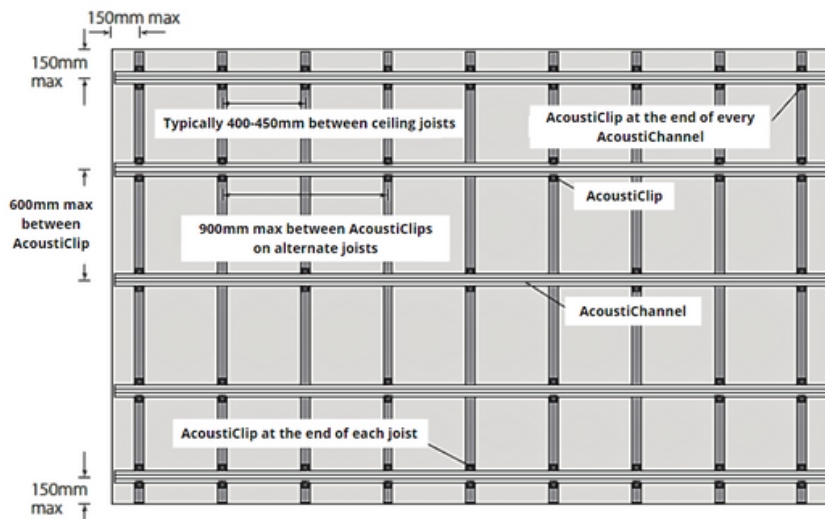
**New Build | Conversions | Refurbishment | Domestic | Commercial**

## Installation

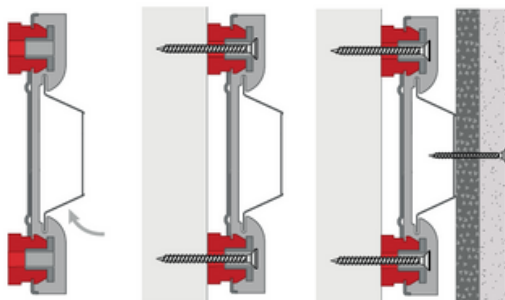
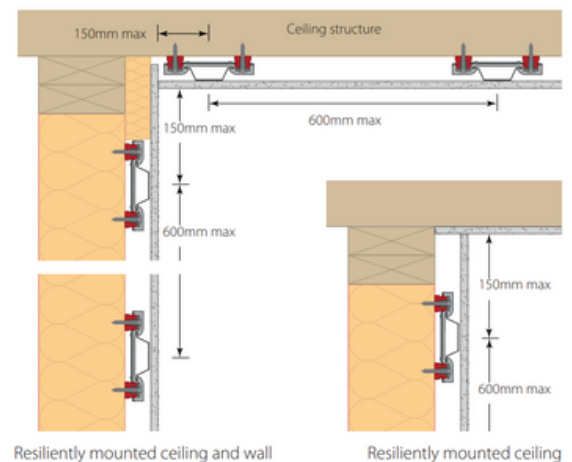
### Wall installation



### Ceiling installation



- The AcoustiClip can be fitted to the AcoustiChannel before fixing them to the ceiling or wall.
- Pinch the bridge of the AcoustiChannel at the end and slide them into the AcoustiClip so they will slide into position.
- The clips are attached using screws inserted through the circular inserts at either end.
- Where the bars join, overlap them by 100mm and screw them together.
- Fix the boards into the AcoustiChannel using screws (dry-wall or suitable self-drilling screws for use with a metal frame system). Ensure the fixings are at least 10mm longer than the collective board depth.
- When installing the system on walls, ensure the bottom of the plasterboard is supported on packers.



## Attaching AcoustiClip & AcoustiChannel

- Pinch the bridge of the channel and slide/insert it into the clip
- Fix the clip to the wall/ceiling using appropriate fixings suitable for the background surface.
- Secure the boarding to the channel using suitable screws for the type of board. The fixing length must be a minimum of 10mm longer than the combined depth of boarding.
- When installing on walls, use packers along the bottom of the boards.