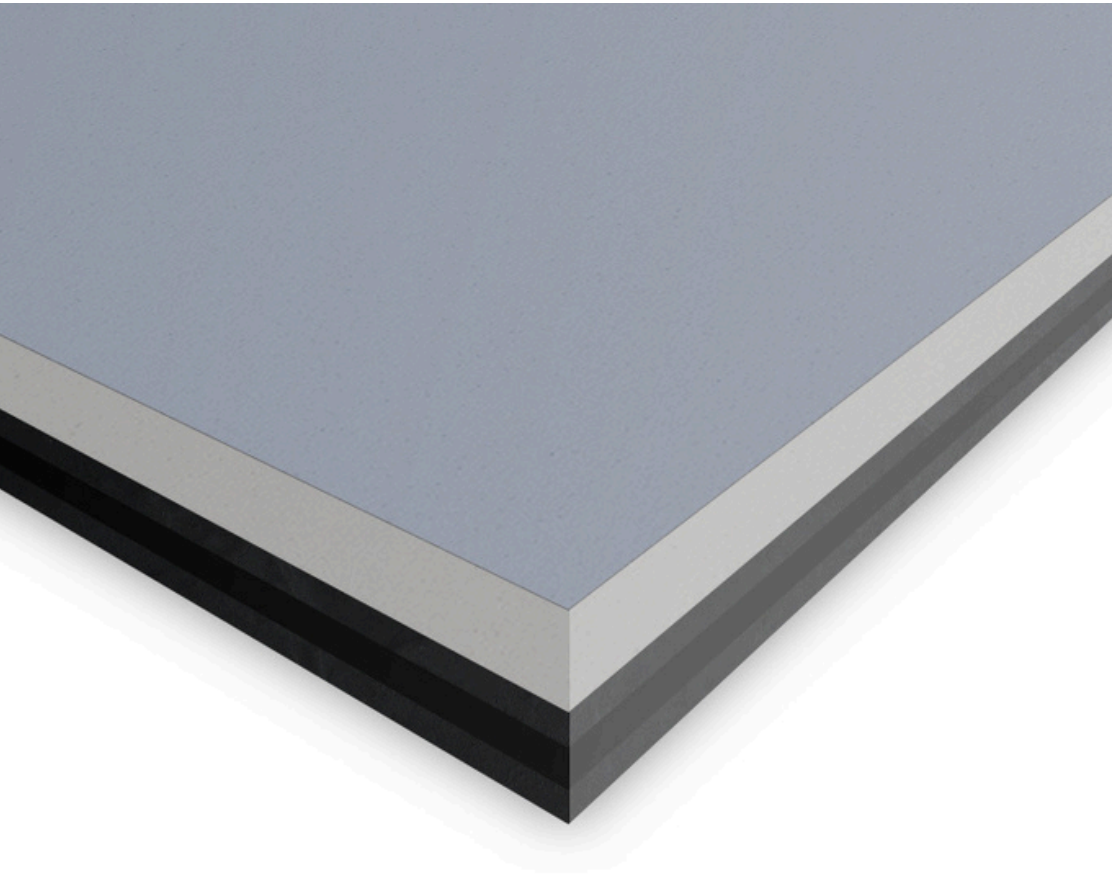


# NOISESTOP SILENT PANEL

SOUNDPROOFING SPECIALISTS  
NOISESTOP SYSTEMS

**NOISESTOP**  
SYSTEMS



**NOISESTOP SILENT  
PANEL DIRECT  
TO WALL  
SOUNDPROOFING  
SOLUTION**

**NOISESTOP**  
SYSTEMS

## **DIRECT TO WALL SOUNDPROOFING**

*Not every room that requires soundproofing has the space required to install a complete soundproofing system.*

*Direct to wall soundproofing solutions are suitable for rooms that require medium levels of noise control.*

## **NOISESTOP SILENT PANEL**

As a direct to wall soundproofing solution, the Noisestop Silent Panel is our highest performing stand-alone product.

Apply either directly onto solid party walls to soundproof against noisy neighbours or increase the sound insulation of stud walls by applying the panel over the existing plasterboard.

These solutions are popular for use in rooms that are already tight for space but need an additional level of soundproofing.

## NOISESTOP SILENT PANEL

**Our highest performing direct to wall soundproofing solution. Minimise space loss and increase the sound insulation in your home.**

### NOISESTOP SILENT PANEL

Reduce neighbour noises such as clear conversation and TV noise through party walls, upgrade existing stud walls

### SPACE SAVING

Space loss is kept to a minimum using this 30mm soundproofing panel. Minimal disruption within the room

### SOUNDPROOFING

Soundproof your home, office or workplace to restore quiet within rooms that will only allow minimal space loss

## Product Features

**Comprises of four pre-bonded layers to form the complete 1200mm x 1200mm panel**

- 30mm thick
- Weight 41kg
- 52dB on a single-skin brick wall
- 52dB on a stud wall
- 30-minute fire rating

1. Acoustic plasterboard 15mm
2. Mass-loaded vinyl 7.5kg/3mm
3. Acoustic grade closed-cell foam 9mm
4. Mass-loaded vinyl 7.5kg/3mm

Noisestop Silent Panel comprises four layers that are pre-bonded for ease of installation. The board's surface is a 15mm acoustic plasterboard, allowing for a plaster skim before decorating. The triple-layered acoustic membrane on the back of the panel is 7.5 kg mass-loaded vinyl, 9mm closed-cell acoustic grade foam, and a 7.5kg mass-loaded barrier layer.

Combining the materials that make up this soundproofing panel ensures the airborne sound is blocked and absorbed. Soundproofing walls using this type of panel will reduce the passage of airborne sound through separating brick party walls and internal stud walls.



## NOISESTOP SILENT PANEL

**Our highest performing direct to wall soundproofing solution. Minimise space loss and increase the sound insulation in your home.**

## Fitting

**Preparing the wall** - Before fitting the panels, check and prepare the wall to ensure any holes are filled. Remove skirting and coving; if you have electrical outlets, they should be extended if necessary. Once the installation is finished, reinstate the skirting, coving, and electrical outlets.

**Plan the fitting** - Install the panels anywhere along the wall, starting with the bottom row. Measure the wall and start at a point that means you are not left with a small off-cut at the end. Cut the panels with either a hand saw or a circular saw.

**Attaching the panels** - Apply the Noisestop Silent Panel to the walls using Hammer Fixings. Fix the panels using nine hammer fixings per board. Screw the panels onto timber or metal studs using drywall screws.

**Acoustically seal the boards** - To ensure an acoustic seal between the boards, you should run a bead of acoustic sealant along the edge of the panels as you butt them together. Leave a 2-3mm gap between the boards and floor, walls and ceiling and fill with an acoustic sealant once the panels are all in place.

**Finish fitting the panels** - Continue along the bottom row until the panels are all fitted, then start the next row following the same method as the first row. Use acoustic sealant around the wall's perimeter and between any boards that require additional sealant.

**How to finish** - Before decorating, we recommend plastering the panels. Alternatively, the edges can be taped and filled, or heavy-duty lining paper can be used. You can also paint directly onto the panels.

**Electrical outlets** - To maintain the wall's acoustic integrity, use acoustic putty pads inside recessed back boxes of electrical points.

## NOISESTOP SILENT PANEL

Our highest performing direct to wall soundproofing solution. Minimise space loss and increase the sound insulation in your home.

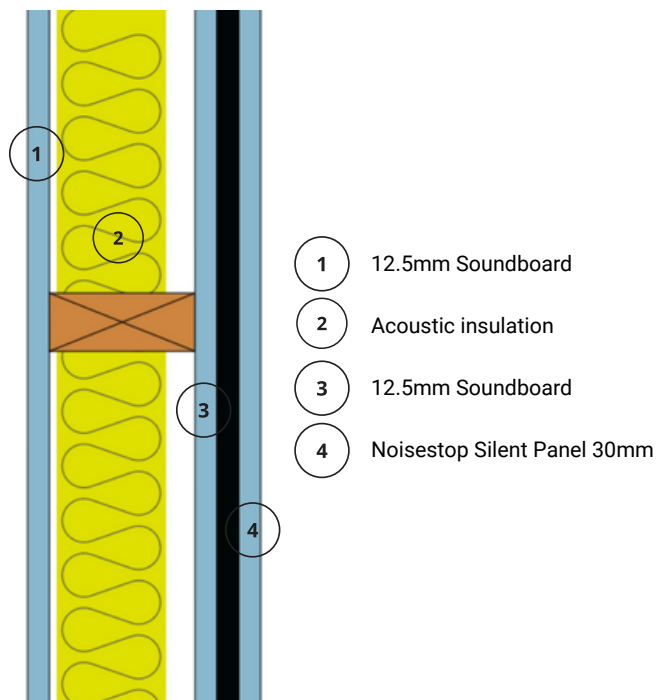
## System Performance

### Performance Data

Noisestop Silent Panel applied to one side of the stud wall

Untreated 100mm stud wall with acoustic insulation and 12.5mm plasterboard either side	DnT,w 36dB
Silent Panel 30mm applied to one side	DnT,w 52dB
Improvement	DnT,w 16dB

Rating in accordance to ISO 717-1



### Performance Data

Noisestop Silent Panel applied to 100mm brick wall

Untreated 100mm single skin brick wall	DnT,w 38dB
Silent Panel applied to 100mm brick wall	DnT,w 52dB
Improvement	DnT,w 14dB

Rating in accordance to ISO 717-1

